



Centre Point, 101-103 New Oxford Street,  
, WC1A

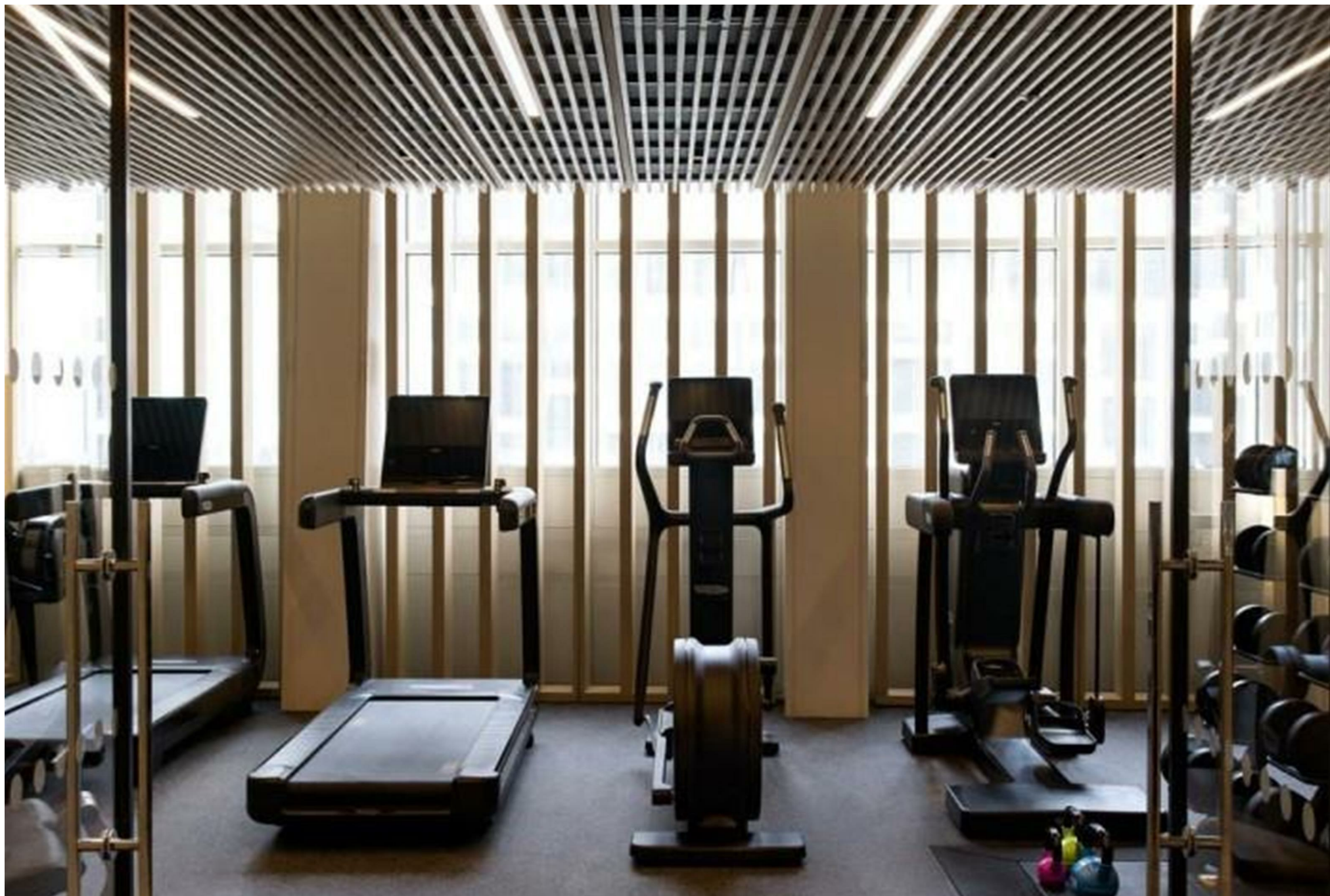
Asking Price £1,800,000, Leasehold

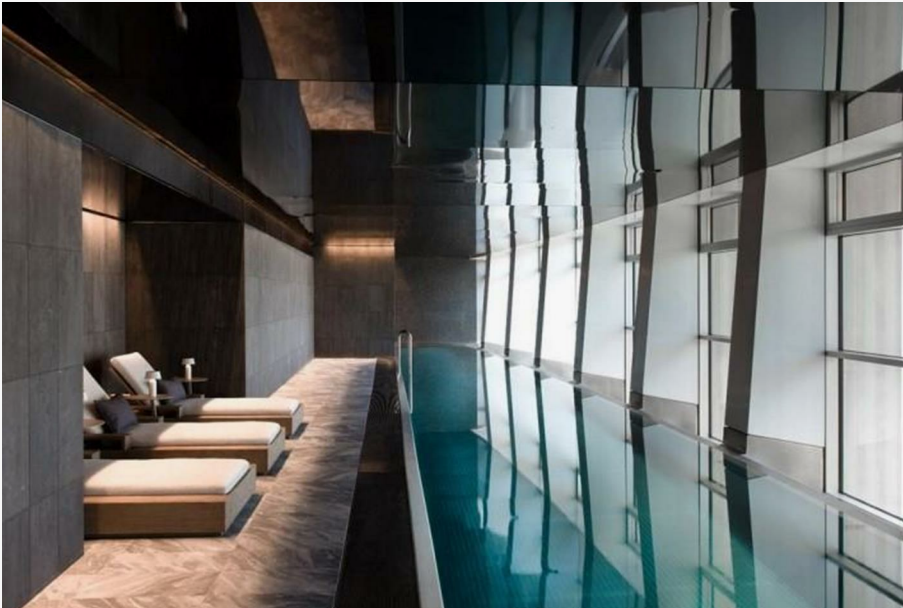
NAPIER WATT

T: 0207 935 0011  
E: [enquiries@napierwatt.co.uk](mailto:enquiries@napierwatt.co.uk)  
W: [napierwatt.co.uk](http://napierwatt.co.uk)

35 Berkeley Square, Mayfair, London, W1J 5BF







## Description

Situated directly opposite Tottenham Court underground station, this immaculate 1 bedroom apartment is spread laterally with the highest specification including air conditioning.

Creston home automation, electronic blinds and very high specification kitchen and bathrooms with German appliances and fittings. The interior of the apartment, has graceful proportions and the most incredible views across central London.

Concierge, gym, swimming pool, AC and the very highest specification. The apartment has a wealth of space, on the sixth floor accessed from a generous foyer on its floor shared with only one other apartment affording residents rarely achieved levels of privacy. Spread laterally and generously the property comprises, a large reception, kitchen, master bedroom suite with en suites and a guest wc/powder room.

EPC Rating B.

## Key Features

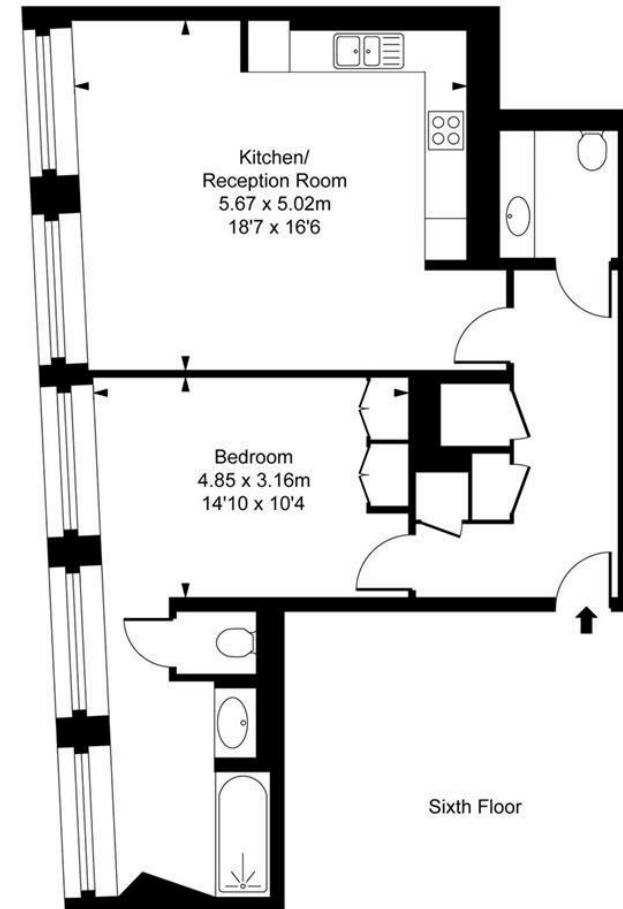
- CONCIERGE
- GYMNASIUM
- RESIDENTS LOUNGE
- SMART CONTROL
- AIR CONDITIONING
- SWIMMING POOL
- HIGH FLOOR

## Terms

Leasehold: 999 years from 1 July 2017 ie 990 years



Centre Point,  
New Oxford Street, WC1A  
Approximate Gross Internal Area  
69.49 sq m / 748 sq ft



This plan is not to scale. It is for guidance and not for valuation purposes.  
All measurements and areas are approximate only, and have been prepared in accordance with the current edition of the RICS Code of Measuring Practice.  
© Fulham Performance

IMPORTANT: We would inform prospective purchasers that these sales particulars have been prepared as a general guide only. A detailed survey has not been carried out, nor the services, appliances and fittings tested. Room sizes should not be relied upon for furnishing purposes and are approximate. If floor plans are included, they are for guidance only and illustration purposes only and may not be to scale. If there are any important matters likely to affect your decision to buy, please contact us before viewing the property.